


INSTRUCTIONS FOR USE

General

The LF 70 mobile filter unit for extraction of gases, fumes and particles, is manufactured to meet the UL and CSA standards according to the medical directive.

 Please note that electronic equipment is always sensitive for static electricity, moisture, high temperature, dust and net disturbance. The equipment is partly powered with high voltage. Always disconnect the power cord, as mains disconnect, at service work and at filter changes on LF 70.

The LF 70 is not intended for use with flammable anaesthetic mixtures with air, oxygen, nitrous oxide or other hazardous mixtures.

Display, control and accessories

The control unit with a display shows what kind of pollutant the filter is configured for. A cycle counter shows where the variable speed control is on the scale.

At particle extraction (LF 70P) the filter will start at 0 hours and show the number of working hours of the filter. This counter will be reset to 0 when you change the filters. A differential pressure manometer (LFD) is available as an accessory, (has to be installed at delivery). It will indicate when the filter is full.

At gas extraction (LF 70PG and LF 70G) the filter will start at the preset number of hours, depending on type of gas and air flow. This value will be reset when you change filters.

To get an exact air flow through the filter, a flow meter (LFF) is available as an accessory, (has to be installed at delivery). It will always show the current air flow, irrespectively of the pressure drop in the extraction source.

The remote control (LFR), is an accessory for starting/ stopping the fan and adjusting the air flow. A connection is placed beside the power inlet. This accessory is made for LF 70 and is not to be used with any other equipment and the connection is not for phone use.

The outlet connection (LFO) is an accessory used for connecting a separate outlet hose.


Maintenance

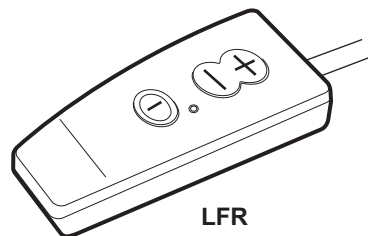
The mobile filter LF 70 is color coded for an easy maintenance work. The light gray lid is available for all operators. Appropriately qualified technical personnel must disconnect the dark gray panels for maintenance work. For disconnecting of the black colored panels please contact Movex.

To obtain a perfect function we recommend a monthly inspection of the locking device for the filters and tighten if necessary.

For external cleaning we recommend alcohol-based solvents.

Battery

 A backup battery is placed in the secondary circuit to maintain vital information in case of storage, transport, net disturbance or temporary drop of power supply. This battery does not have to be disconnected. In case of battery replacement please contact Movex.



TECHNICAL DESCRIPTION

General

The LF 70 is delivered in a strong cardboard box. A rating plate is placed under the lid beside the console. Working temperature is between +50° to 104°F. The air humidity must not exceed 75 %.

 The electronics in LF 70 emits heat and is supplied with a separate cooling fan. The cooling inlet is placed under the LF 70, when it is placed on the wheels. Keep the inlet free from blockage.

Replacement

Changing of particle filter (LF 70P)

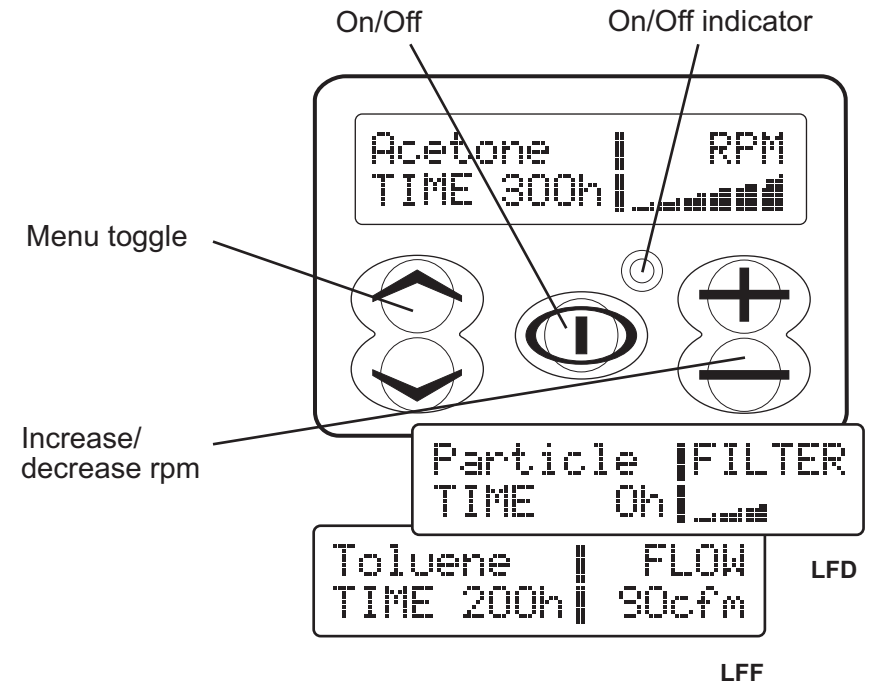
At delivery the display shows the operating time 0h counting up as you use the filter. If the filter is equipped with the LFD differential pressure manometer (accessory), the display sends a warning before there is a critical load on the filter.

Changing of gas filter (LF 70PG and LF 70G)


At delivery the display shows the durability of the gas filter. When 40 hours remains the unit sends a warning with three short signals. When 20 hours remains the unit sends another warning and repeats that warning every full hour until zero hours is left. This warning system is designed as a reminder for you to acquire exchange filters.

Changing of fuses

Double pole/Neutral fusing. Replace fuse only with the same type and ratings. The fuses are placed in the power inlet.




Classification

Type of protection against electric shock:	Class I
Degree of protection against electric shock:	Type B 
Degree of protection against harmful ingress of water:	Ordinary equipment
Mode of operation:	Continuous

With respect to electric shock, fire and mechanical hazards only in accordance with UL2601-1, IEC 60601-1, CAN/CSA C22.2 No 601.1

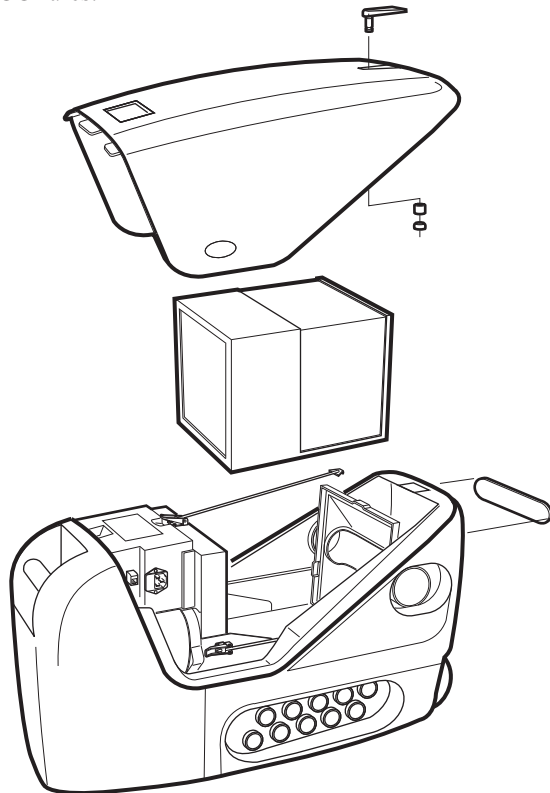
**Technical specification**

Power:	300 W
Voltage:	115 V~, 50/60 Hz
Current:	4 A
Fuse:	2xT6.3 AH-250V
Battery:	230 mAh/3V – Li/MnO

Protective earth ground: 

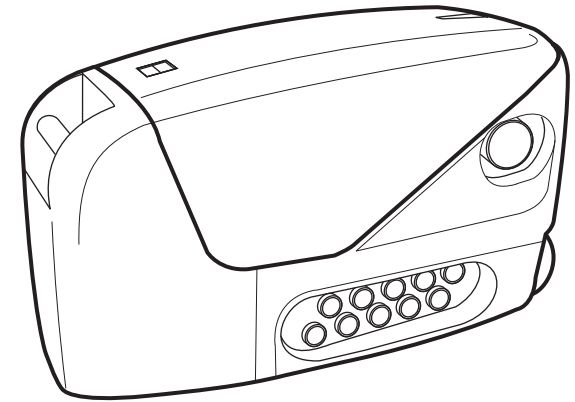
Manufacturing declaration

Movex assures that the LF 70 is made in agreement with following standards: UL 2601-1 and CSA C22.2 No601.1 part 1, classification PIDF, PIDF7. LF 70 also complies with the limits for class B medical device, pursuant to part 15 class A of FCC rules.



Produktion: Autotech SPS AB Boliden

MANUAL



LF 70

MOVEX[®] INC.
Bath, PA

5966 Keystone Drive Bath, PA 18014, USA
 Phone: 610-440-0478 Facsimile: 610-440-0480
 www.movexinc.com e-mail: info@movexinc.com